



# VILLAGE ESTATES



93 Main Road, Sidcup, Kent DA14 6ND

Tel: 0208 302 1002

www.village-estates.com

Email: sidcup@village-estates.com



**EXTENDED KITCHEN AND UTILITY ROOM**

**CLOSE TO LOCAL AMENITIES**

**AMPLE OFF STREET PARKING**

**LARGER THAN AVERAGE SHOWERROOM**

**FRENCH DOORS TO REAR GARDEN**

**EXTENDED LIVING AREA**



**5 Harefield Road**  
Sidcup, DA14 4RJ

**£550,000**

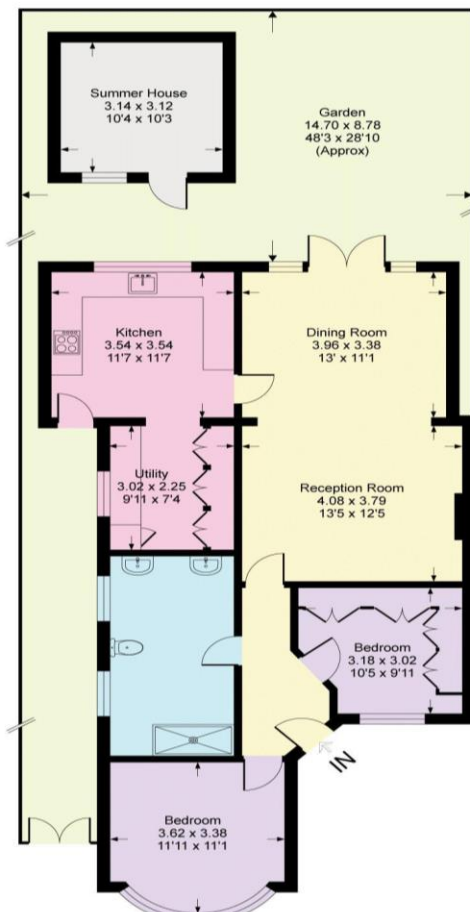
**Modernised and extended this spacious two bedroom (previously three bedroom) semi-detached bungalow conveniently located for many local amenities; it must be viewed internally to appreciate the amount of accommodation on offer. Benefitting from a Spacious Shower room with his and her sinks, off street parking, private rear garden, Extended living area and kitchen with utility room an early viewing is recommended.**

**EPC RATING: F**

**COUNCIL TAX BAND: E**

**TENURE: Freehold**

**LEASE TERM: Not Applicable**



**CONSUMER PROTECTION FROM UNFAIR TRADING REGULATIONS 2008**

Please note that any services, heating system or appliances have not been tested, and no warranty can be given or implied as to their working order. You are advised to obtain verification from your solicitor or surveyor. References to the tenure of a property are based on information supplied by the seller. We have not had sight of the title documents and a buyer is advised to obtain verification from their solicitor. Items shown in photographs are not included unless specifically mentioned within the sales particulars, but may be available by separate negotiation. Whilst every attempt has been made to ensure the accuracy of the floor plan contained here, measurements of doors, windows, rooms and any other items are approximate and no responsibility is taken for any error, omission, or mis-statement. We advise you to book an appointment to view before embarking on any journey to see a property, and check its availability. The accuracy of these details are not guaranteed and they do not form part of the contract.